

These are the default Follow Modes set up in your CAME-TV 7800 Gimbal. These are similar to the Follow Modes found on other Gimbal models as well. The Follow Modes are set differently between Profile1, Profile2, and Profile3.

There are three main profiles set in the CAME-TV 7800 Gimbal. You can change to different Profiles when operating the Gimbal by pressing the Joystick down into the center of itself.



One Click will switch to Profile1. Two Clicks will switch to Profile2. Three Clicks will switch to Profile3.

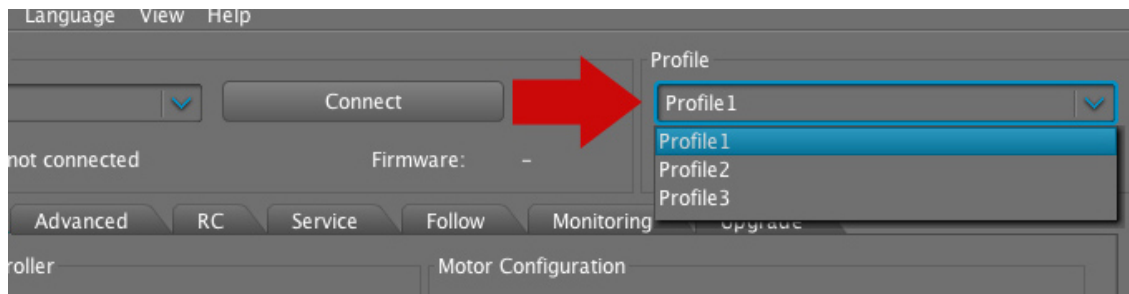
**Profile1** will enable Follow Modes for both Pan and Tilt (Yaw and Pitch).

**Profile2** will enable Follow Mode ONLY for PAN (Yaw) and will Disable Tilt (Pitch).

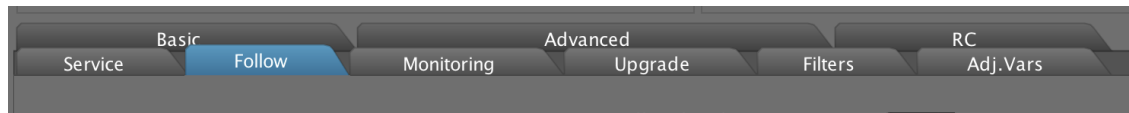
**Profile3** will Disable All Follow Modes. The Camera heading will stay constant.

Basically each Profile is an exact copy of itself, except for the Follow Modes. Each profile has a different Follow Mode, and we can toggle between each Profile depending on which Follow Mode we need to use.

To set these Profiles up differently, first use the Drop Down Menu and switch to Profile1

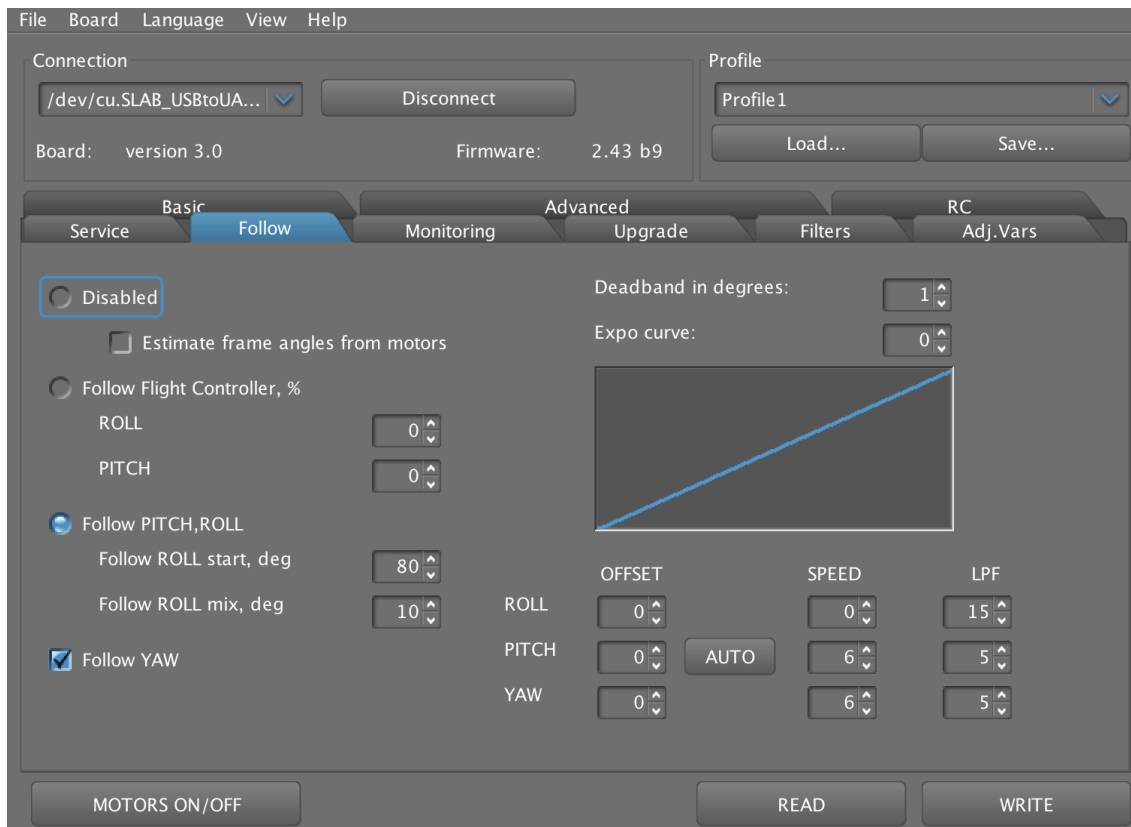


Now select the Follow Tab.



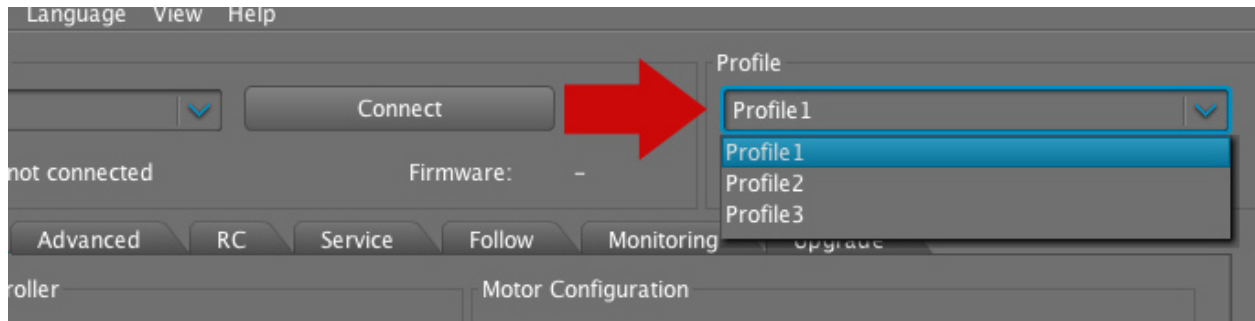
## For Profile1 use the Values Below

In this setting you'll notice we have Follow Pitch and Follow YAW selected. Remember in Profile1 the camera Follows both Pan and Tilt.



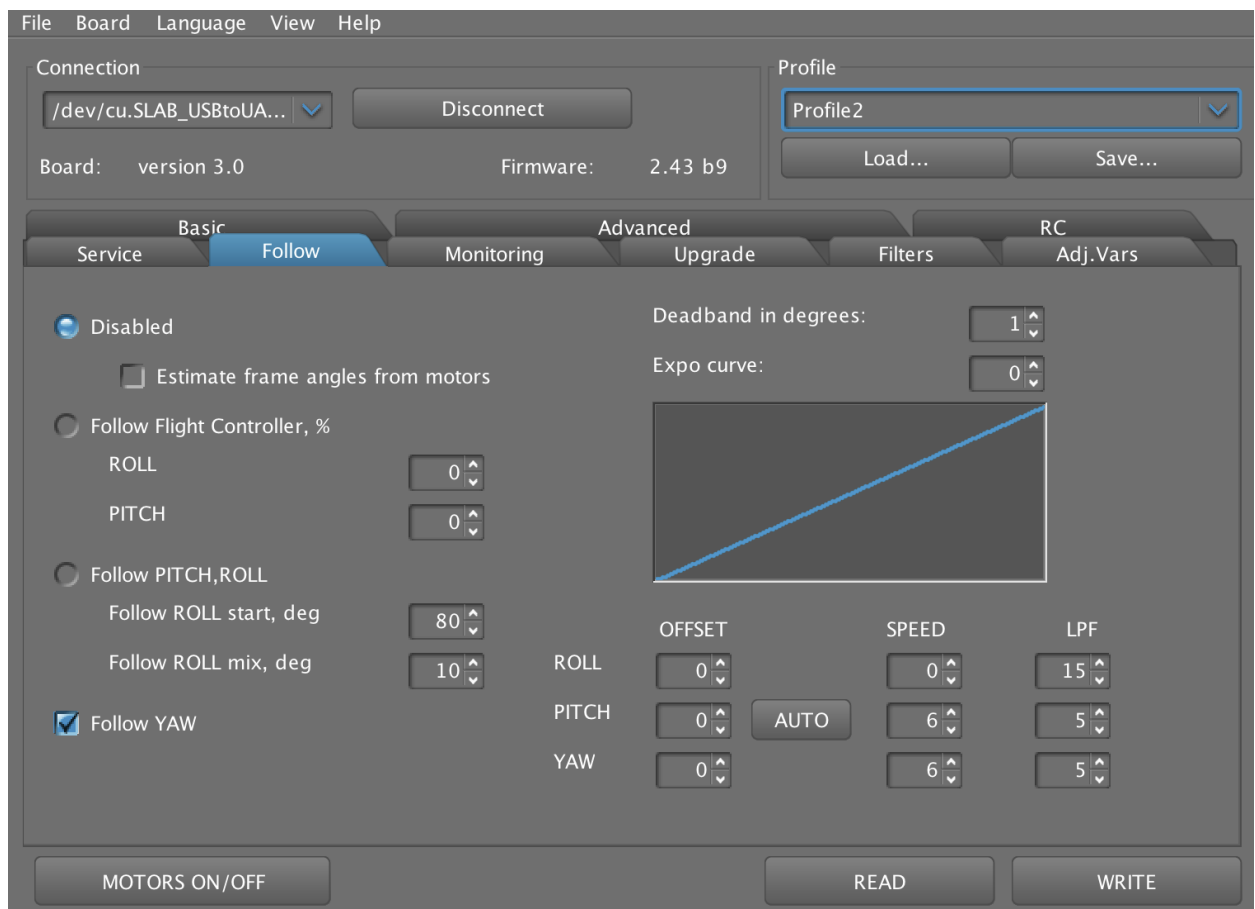
**Save the Settings by clicking the WRITE Button** after you've made the changes!

After saving your changes we need to use the drop down menu and select Profile2.



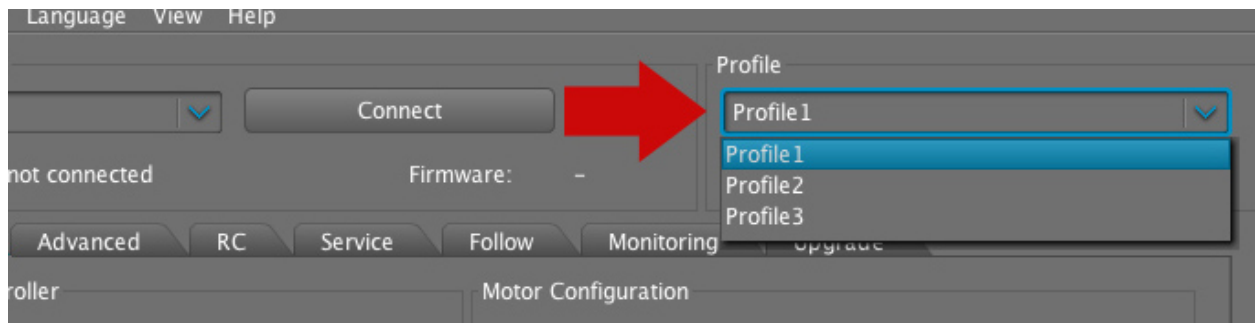
## For Profile2 use the Values Below

Notice that we have only Follow YAW selected (not Pitch). Remember that in Profile2 the gimbal will only Follow panning movements (not tilt).



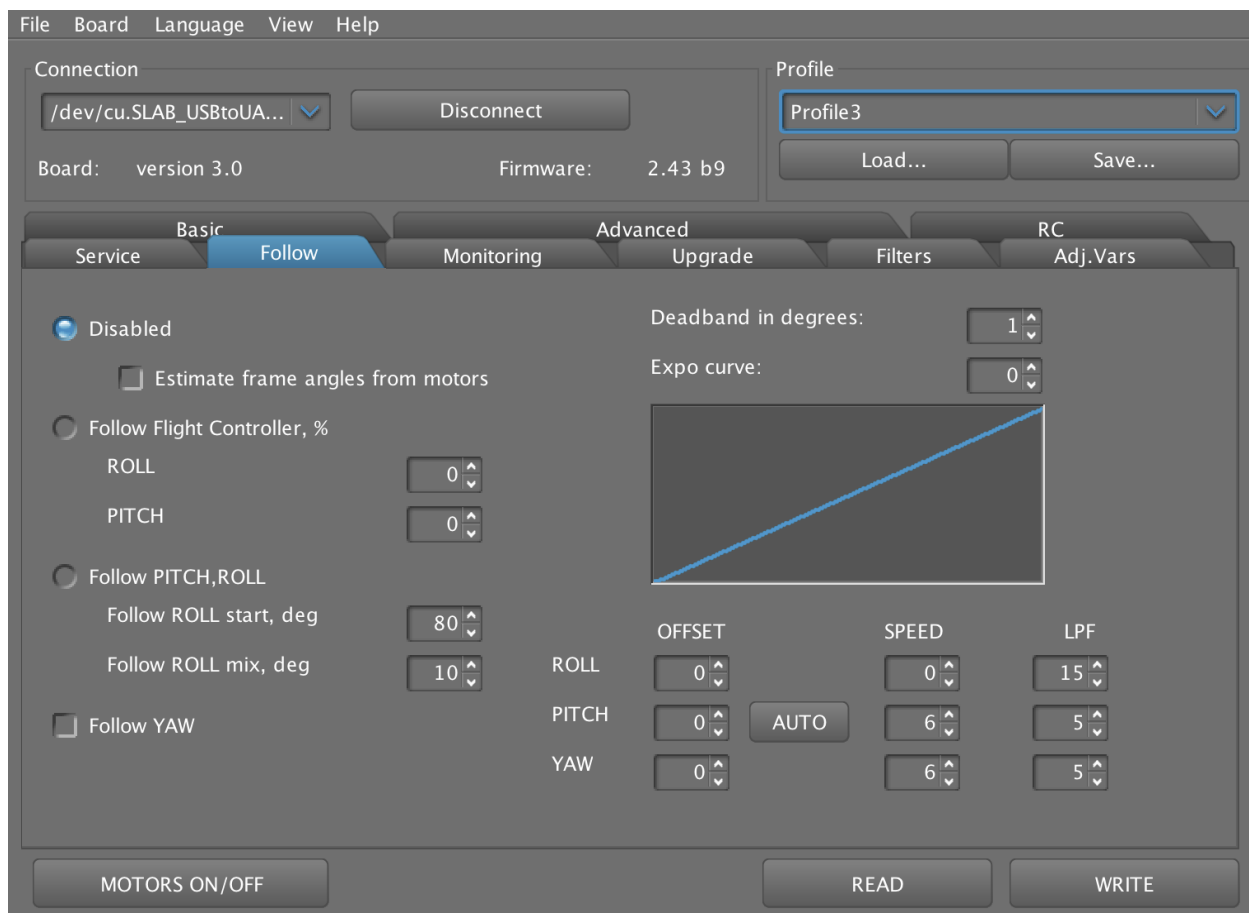
**Save the Settings by clicking the WRITE Button** after you've made the changes!

After saving your changes we need to use the drop down menu and select Profile3.



## For Profile3 use the Values Below

Notice how we have Disabled both Pitch and Yaw. Remember in Profile3 the gimbal does not follow either Pan or Tilt movements, therefore we have disabled these settings.



**Save the Settings by clicking the WRITE Button** after you've made the changes!

If you want to change the Speed of your Pan or the LPF Setting, you can find those settings on the lower right corner of the application (Follow Tab). Because each follow mode is different depending on the Profile, you will need to make the changes to each profile. If you find a setting that you think works well, you will have to replicate the same Speed Setting and LPF setting for each of the Profiles.

**LPF in the Follow Tab is used to control the responsiveness of the Follow Mode.**

**HIGHER LPF VALUE** will delay the camera movements after movement has started. The camera will also take longer to come to a complete stop after Joystick. It will basically 'ramp up speed' during the start of camera movement and 'ramp down speed' at the end of camera movement.

**LOWER LPF VALUE** will have immediate camera response. The camera will move immediately when the Joystick is applied, and will come to a sudden stop after Joystick application. This causes a 'jerky motion' which does not appear smooth, but is better for tracking very fast subjects.

**Tip:** In addition, a High LPF Value will be less responsive with small jerky movements. This setting might be better if you plan on running with your system which could cause the handles to have constantly small shifts in position.